

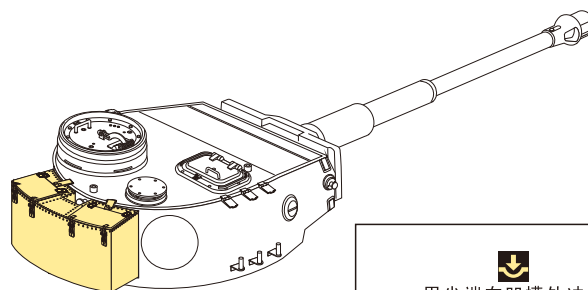
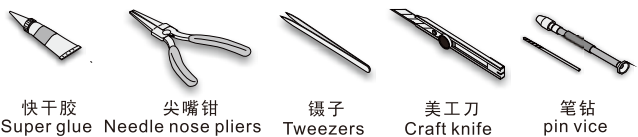
1/35 MILITARY MINIATURE VEHICLE UPGRADE SERIES PEA055

WWII German Tiger I Stowage bin

二战德军虎I型坦克储物箱

[GP]

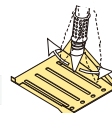
■ 推荐使用工具 RECOMMENDED TOOLS



用尖端在凹槽处冲压
use penpoint to press on the dent

蚀刻片零件内侧面向上
Put the part upside down

用笔尖在凹槽处刮
Use penpoint to press on the dent



↑
安装
install

↩
折叠
bend

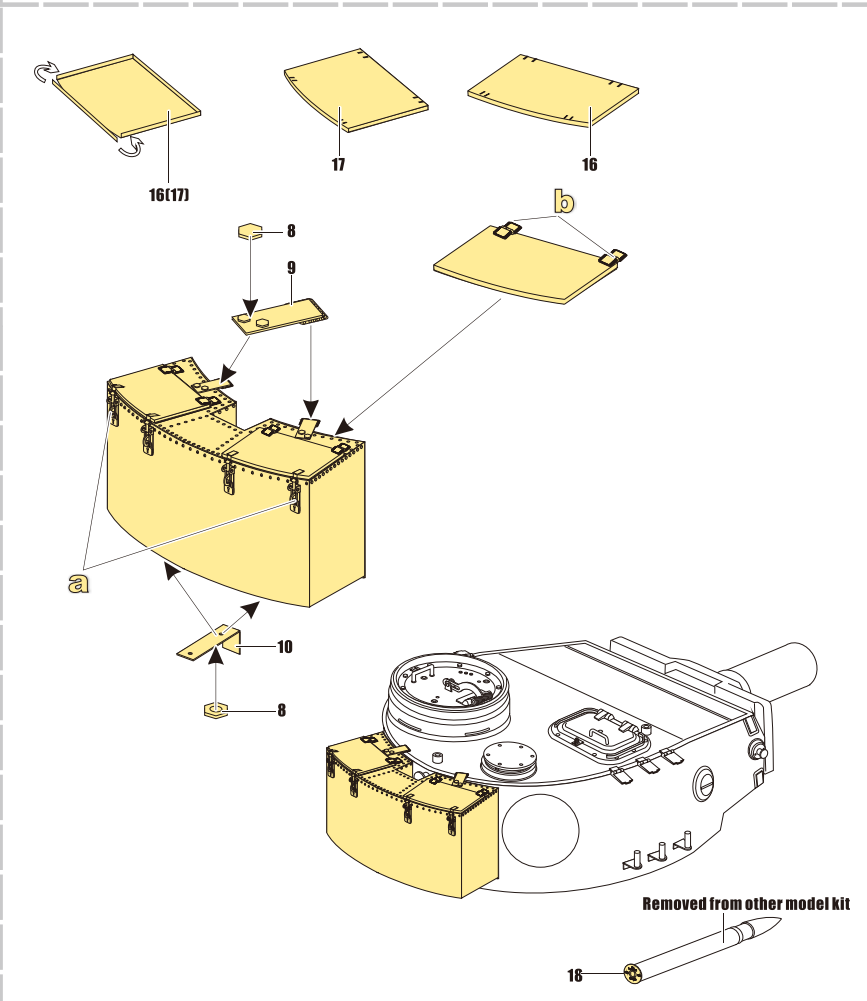
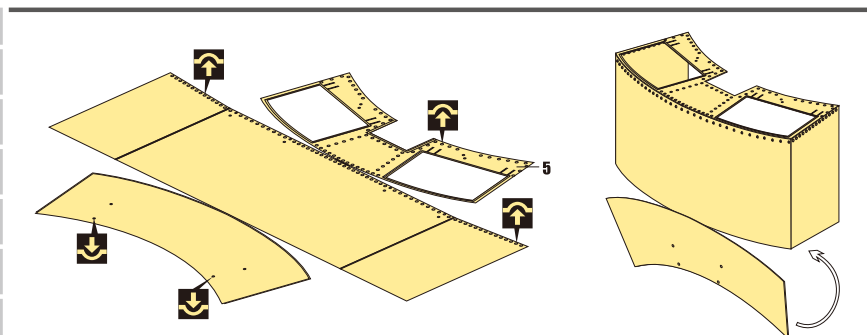
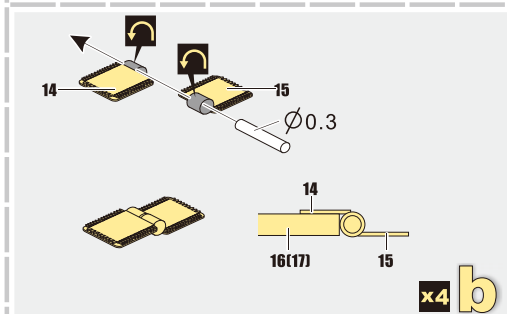
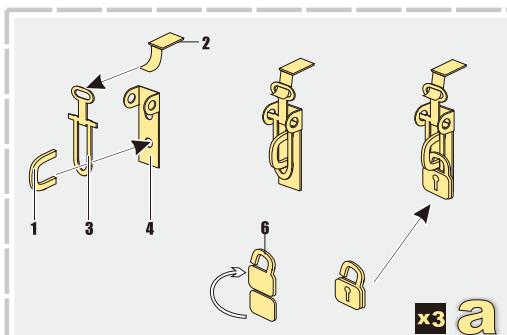
A1
改造件零件编号
PE/resin part number

↪
弧度卷曲
radial bending

x2
制作若干组
multiple assembly

另一侧相同制作
repeat on
opposite side

用胶棒制作
make from
plastic rod



Removed from other model kit

18